

1 2 3 4
 THE INFORMATION DISCLOSED HEREIN INCLUDES PROPRIETARY RIGHTS OF BLUFFTON MOTOR WORKS. NEITHER THIS DRAWING NOR THE INFORMATION DISCLOSED THEREIN SHALL BE REPRODUCED OR TRANSFERRED TO OTHER DOCUMENTS OR USED OR DISCLOSED TO OTHERS FOR MANUFACTURING PURPOSES OR FOR ANY OTHER PURPOSES EXCEPT AS SPECIFICALLY AUTHORIZED IN WRITING BY BLUFFTON MOTOR WORKS.

1103017447

UNLESS OTHERWISE SPECIFIED DIMENSIONS WITHOUT TOLERANCES ARE REFERENCE ONLY

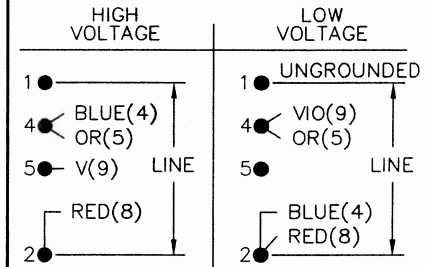
NOTES

- ECCENTRICITY OF THREADED PORTION OF SHAFT IS HELD WITHIN .010 T.I.R. WITH INDICATOR ON OUTSIDE DIA. OF GROUND RING GAUGE BEING STATIONARY WITH RESPECT TO THE MOTOR.

LEADS

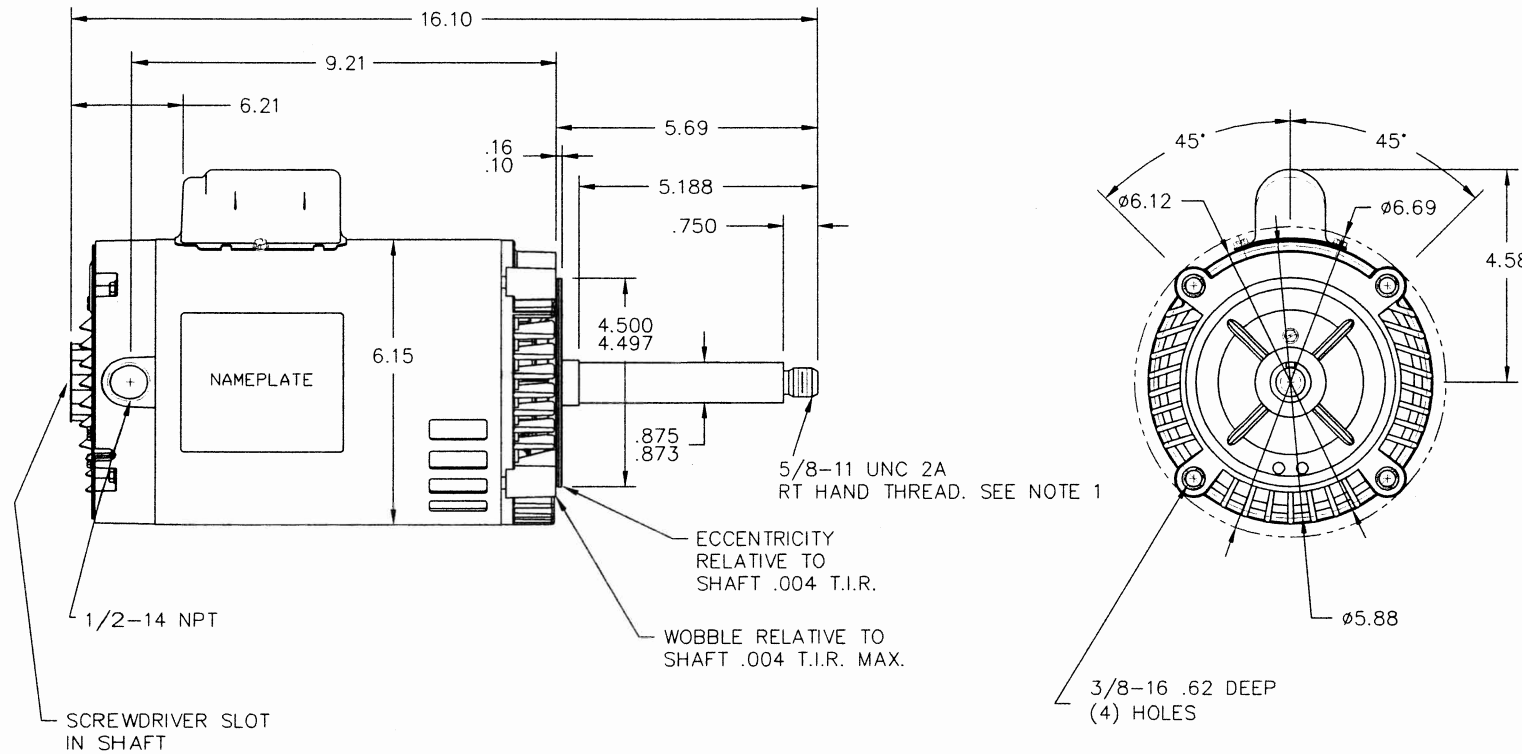
TERMINAL BOARD

EXTERNAL CONNECTIONS



TO REVERSE, INTERCHANGE ORANGE (5) AND RED (8).

D
C
B
A



REF: 1137028401PR1

MOTOR DATA

TYPE	CSIR	FRAME 56 CZ	PH 1	ENCLOSURE OPEN	END CAP UNASSEMBLED	VIEWING LEAD END	MOTOR ROTATION REV
		60 HZ	50 HZ	BEARINGS	BALL / BALL	ASSEMBLY ROTATION	CCW
HP			.75	PAINT	GRAY PRIME SHELL	ASSEMBLY VOLTAGE	LOW
SF			1.15	MOUNTING POSITION	HORIZONTAL / VERT DOWN	THERMALLY PROTECTED	TYPE U AUTOMATIC
RPM			2875	SHAFT MATERIAL	STRESS PROOF	WINDING AND TEST SPEC	330008
VOLTS			110/220	ENVIRONMENTAL CONDITION	NORMAL	CUSTOMER NAME	REMA DRI VAC CORP.
FLA. AMPS			9.4/4.7	HAZARDOUS CLASSIFICATION	TEMP CODE -	CUSTOMER PART NO.	115979-B
S.F. AMPS			10.4/5.2			DRAWN	GWB 2-17-11
TIME RATE	CONT	MAX AMB.	40° C			APPROVED	-
KVA CODE	J	INS. CLASS	B			RELEASED	-

ECN NO.	REV	CHANGE	INITIAL DATE
	-	-	-

BLUFFTON MOTOR WORKS

MODEL NUMBER

1103017447