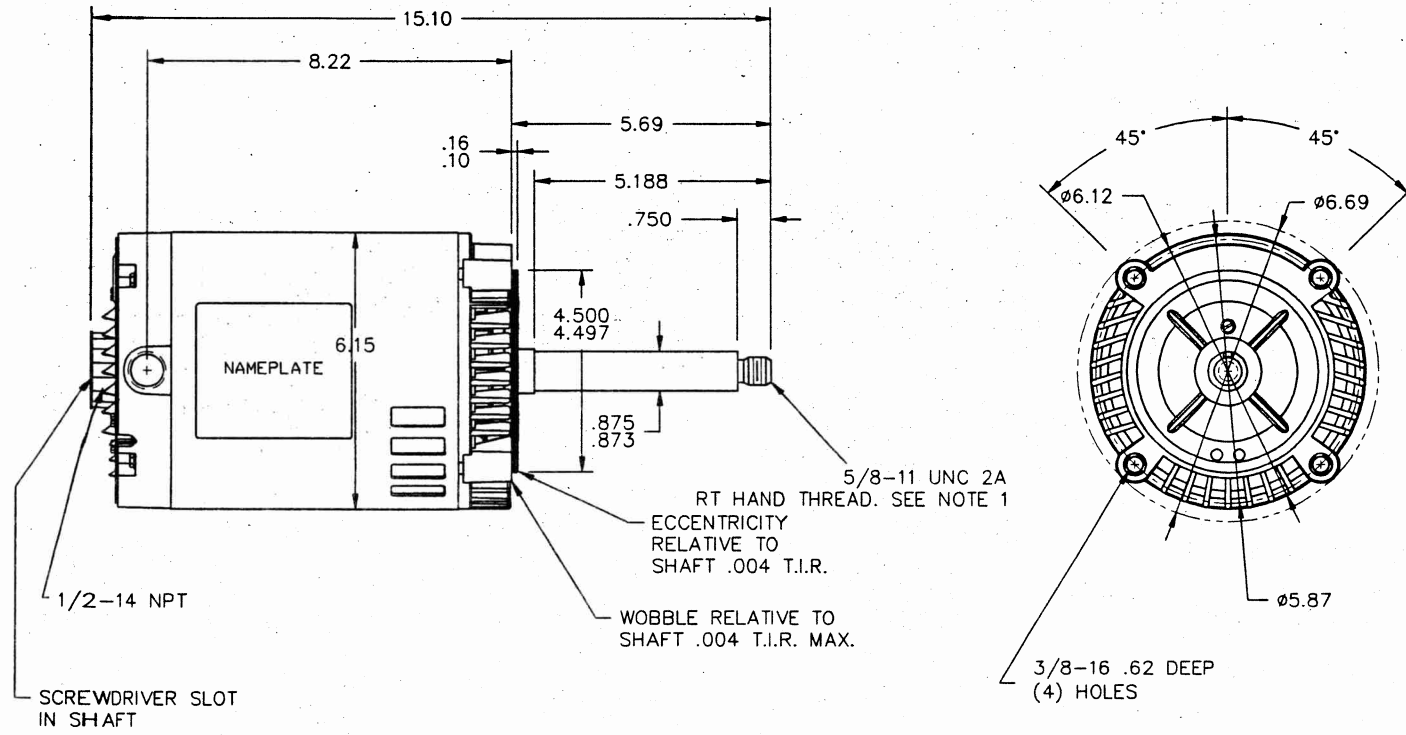


THE INFORMATION DISCLOSED HEREIN INCLUDES PROPRIETARY RIGHTS OF BLUFFTON MOTOR WORKS. NEITHER THIS DRAWING NOR THE INFORMATION DISCLOSED THEREIN SHALL BE REPRODUCED OR TRANSFERRED TO OTHER DOCUMENTS OR USED OR DISCLOSED TO OTHERS FOR MANUFACTURING PURPOSES OR FOR ANY OTHER PURPOSES EXCEPT AS SPECIFICALLY AUTHORIZED IN WRITING BY BLUFFTON MOTOR WORKS.

1303017159

UNLESS OTHERWISE SPECIFIED DIMENSIONS WITHOUT TOLERANCES ARE REFERENCE ONLY

D
C
B
A



NOTES

1. ECCENTRICITY OF THREADED PORTION OF SHAFT IS HELD WITHIN .010 T.I.R. WITH INDICATOR ON OUTSIDE DIA. OF GROUND RING GAUGE BEING STATIONARY WITH RESPECT TO THE MOTOR.

LEADS

4" +2, -0
WITH .44 STRIPPING

EXTERNAL CONNECTIONS

L1 — 1
L2 — 2
L3 — 3

5 — 4
8 — 6
9 — 3

LOW VOLTAGE

L1 — 1
L2 — 2
L3 — 3

4 — 7
5 — 8
6 — 9

HIGH VOLTAGE

REF: 1300942101PR1

MOTOR DATA

TYPE	POLY	FRAME	56 CZ	PH	1	ENCLOSURE	OPEN	END CAP	UNASSEMBLED	VIEWING LEAD END	MOTOR ROTATION	REV
			60 HZ		50 HZ	BEARINGS			BALL / BALL		ASSEMBLY ROTATION	REV
HP		.75		.75		PAINT			GRAY PRIME SHELL		ASSEMBLY VOLTAGE	HIGH
SF		1.15		1.15		MOUNTING POSITION			HORIZONTAL / VERT DOWN		THERMALLY PROTECTED	NONE
RPM		3450		2875		SHAFT MATERIAL			STRESS PROOF		WINDING AND TEST SPEC	334195
VOLTS		208-230/460		208-220/440		ENVIRONMENTAL CONDITION			NORMAL		CUSTOMER NAME	REMA DRI VAC CORP.
FLA. AMPS		2.5-2.4 / 1.2		2.7-2.7 / 1.35		HAZARDOUS CLASSIFICATION		TEMP CODE	-		CUSTOMER PART NO.	115268-B
S.F. AMPS		2.8-2.6 / 1.3		2.9-2.9 / 1.45							DRAWN	GWB 2-12-10
TIME RATE	CONT		MAX AMB.	40° C							APPROVED	-
KVA CODE	K		INS. CLASS	B							RELEASED	-

ECH NO.	REV	CHANGE	INITIAL DATE

BLUFFTON MOTOR WORKS

MODEL NUMBER
1303017159