

1 2 3 4

THE INFORMATION DISCLOSED HEREIN INCLUDES PROPRIETARY RIGHTS OF BLUFFTON MOTOR WORKS. NEITHER THIS DRAWING NOR THE INFORMATION DISCLOSED THEREIN SHALL BE REPRODUCED OR TRANSFERRED TO OTHER DOCUMENTS OR USED OR DISCLOSED TO OTHERS FOR MANUFACTURING PURPOSES OR FOR ANY OTHER PURPOSES EXCEPT AS SPECIFICALLY AUTHORIZED IN WRITING BY BLUFFTON MOTOR WORKS.

1103017441

UNLESS OTHERWISE SPECIFIED DIMENSIONS WITHOUT TOLERANCES ARE REFERENCE ONLY

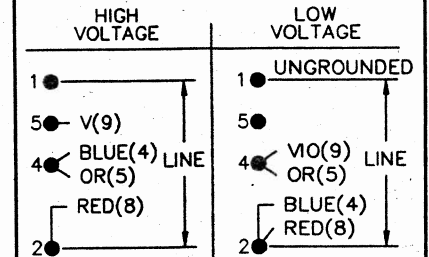
NOTES

- ECCENTRICITY OF THREADED PORTION OF SHAFT IS HELD WITHIN .010 T.I.R. WITH INDICATOR ON OUTSIDE DIA. OF GROUND RING GAUGE BEING STATIONARY WITH RESPECT TO THE MOTOR.

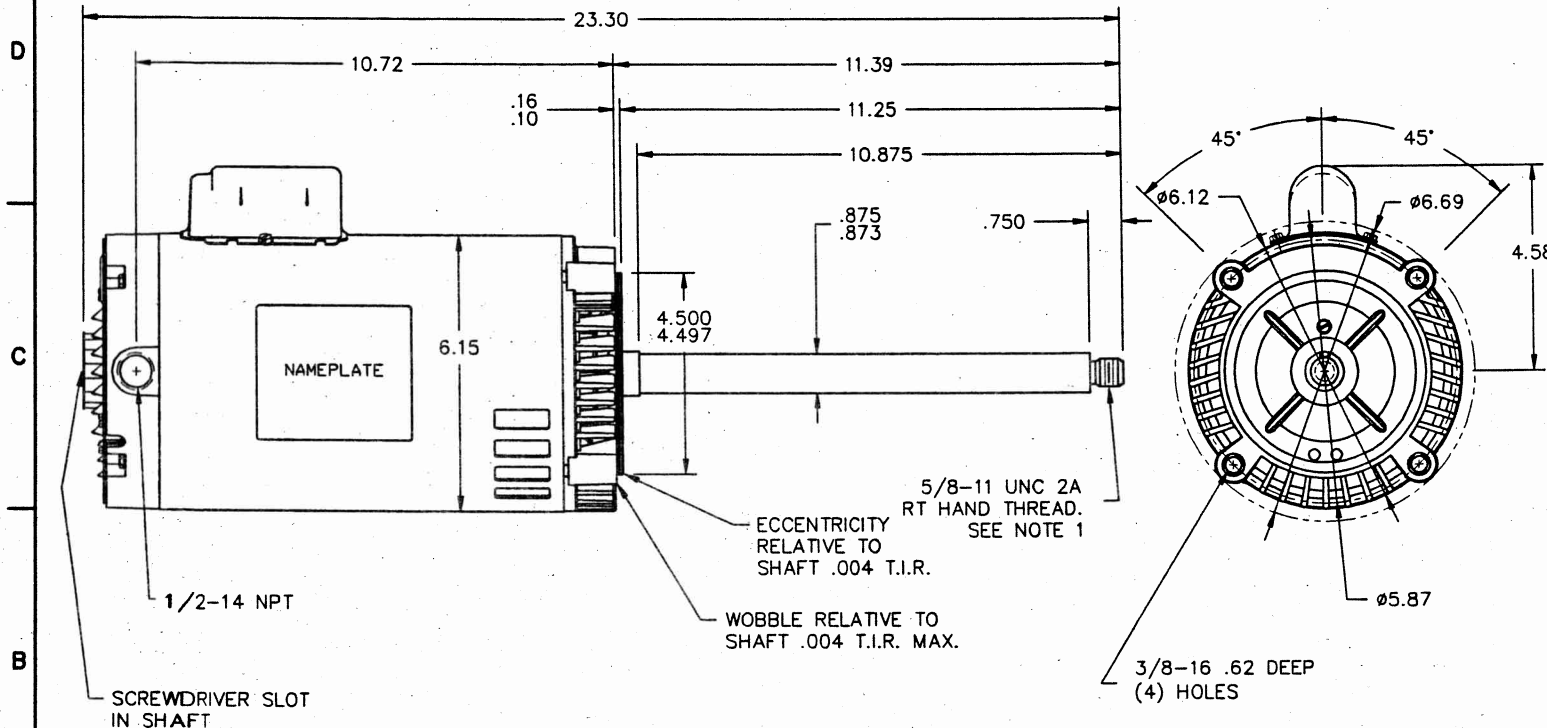
LEADS

TERMINAL BOARD

EXTERNAL CONNECTIONS



TO REVERSE, INTERCHANGE ORANGE (5) AND RED (8).



REF: 1100923402PR1

MOTOR DATA

TYPE	CSIR	FRAME	56 CZ	PH	1	ENCLOSURE	OPEN	END CAP	UNASSEMBLED	VIEWING LEAD END	MOTOR ROTATION	REV
		60 HZ		50 HZ		BEARINGS		BALL / BALL		ASSEMBLY ROTATION		CW
HP		1.0		-		PAINT		GRAY PRIMER		ASSEMBLY VOLTAGE		HIGH
SF		1.25		-		MOUNTING POSITION		HORIZONTAL / VERT DOWN		THERMALLY PROTECTED		TYPE U AUTOMATIC
RPM		3450		-		SHAFT MATERIAL		STRESS PROOF		WINDING AND TEST SPEC		331519
VOLTS		115 / 230		-		ENVIRONMENTAL CONDITION		NORMAL		CUSTOMER NAME		REMA DRI VAC CORP.
FLA. AMPS		11.8 / 5.9		-		HAZARDOUS CLASSIFICATION		TEMP CODE	-	CUSTOMER PART NO.		113379-B
S.F. AMPS		14.0 / 7.0		-						DRAWN		GWB 1-18-10
TIME RATE		CONT		MAX AMB.	40° C					APPROVED		-
KVA CODE		K		INS. CLASS	B					RELEASED		-

BLUFFTON MOTOR WORKS

MODEL NUMBER

1103017441