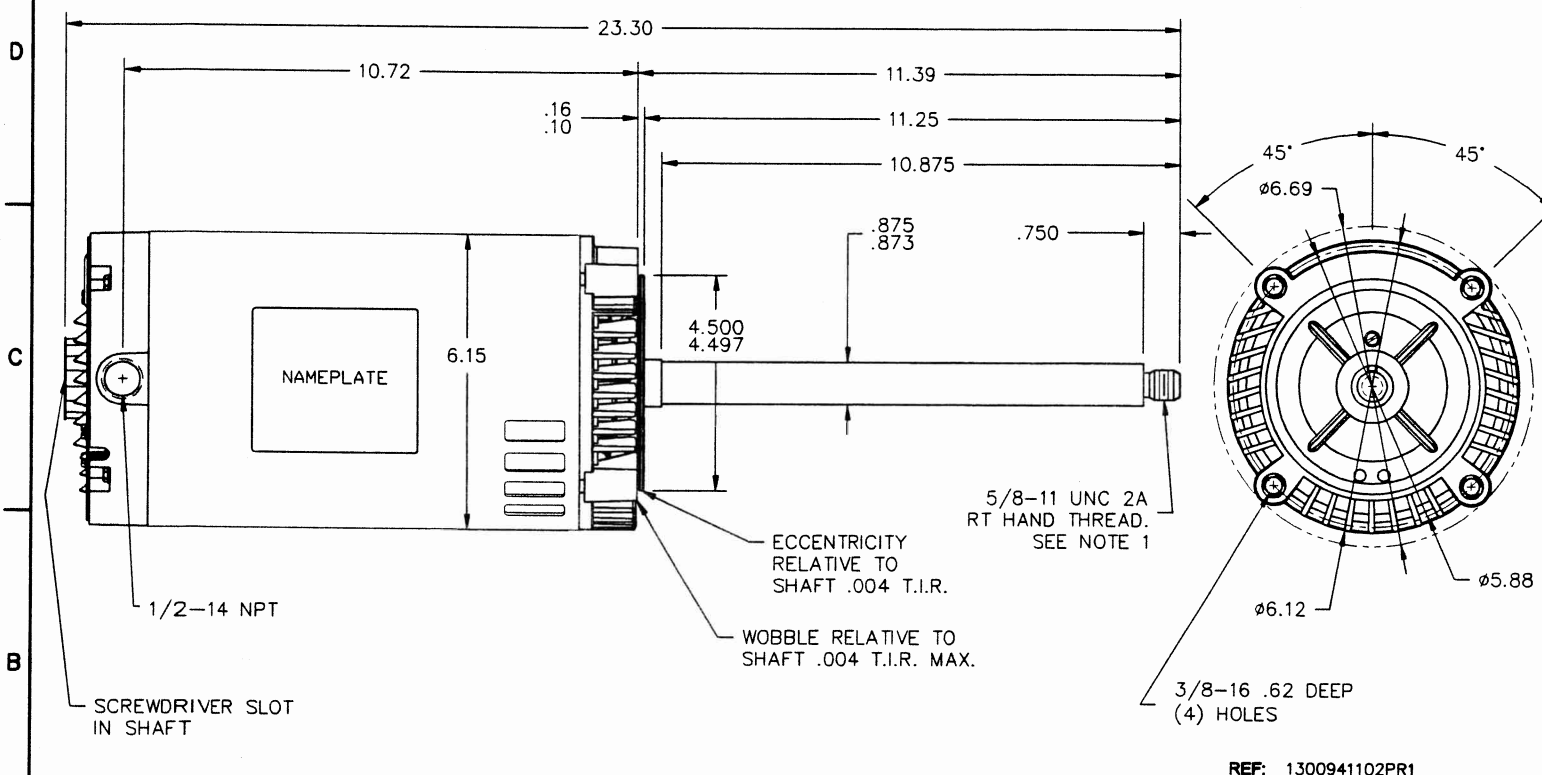


THE INFORMATION DISCLOSED HEREIN INCLUDES PROPRIETARY RIGHTS OF BLUFFTON MOTOR WORKS. NEITHER THIS DRAWING NOR THE INFORMATION DISCLOSED THEREIN SHALL BE REPRODUCED OR TRANSFERRED TO OTHER DOCUMENTS OR USED OR DISCLOSED TO OTHERS FOR MANUFACTURING PURPOSES OR FOR ANY OTHER PURPOSES EXCEPT AS SPECIFICALLY AUTHORIZED IN WRITING BY BLUFFTON MOTOR WORKS.

1303017158

UNLESS OTHERWISE SPECIFIED DIMENSIONS WITHOUT TOLERANCES ARE REFERENCE ONLY



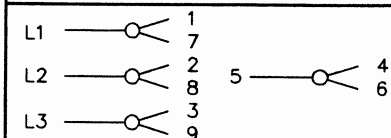
NOTES

- ECCENTRICITY OF THREADED PORTION OF SHAFT IS HELD WITHIN .010 T.I.R. WITH INDICATOR ON OUTSIDE DIA. OF GROUND RING GAUGE BEING STATIONARY WITH RESPECT TO THE MOTOR.

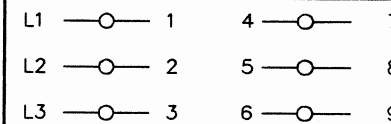
LEADS

4" +2, -0
WITH .44 STRIPPING

EXTERNAL CONNECTIONS



LOW VOLTAGE



HIGH VOLTAGE

MOTOR DATA

TYPE	POLY	FRAME 56 CZ	PH 3	ENCLOSURE OPEN	END CAP UNASSEMBLED	VIEWING LEAD END	MOTOR ROTATION REV
		60 HZ	50 HZ	BEARINGS	BALL / BALL	ASSEMBLY ROTATION	REV
HP		1.0	1.0	PAINT	GRAY PRIMER	ASSEMBLY VOLTAGE	HIGH
SF		1.25	1.0	MOUNTING POSITION	HORIZONTAL / VERTICAL DOWN	THERMALLY PROTECTED	NONE
RPM		3450	2875	SHAFT MATERIAL	STRESS PROOF	WINDING AND TEST SPEC	334193
VOLTS		208-230 / 460	208-220 / 440	ENVIRONMENTAL CONDITION	NORMAL	CUSTOMER NAME	REMA DRI VAC
FLA. AMPS		3.2-3.2/1.6	3.6-3.6/1.8	HAZARDOUS CLASSIFICATION	TEMP CODE -	CUSTOMER PART NO.	114795-B
S.F. AMPS		3.8-3.8/1.9	-			DRAWN	GWB 2-23-10
TIME RATE	CONT	MAX AMB.	40° C			APPROVED	-
KVA CODE	L	INS. CLASS	B			RELEASED	-

ECH NO.	REV	CHANGE	INITIAL	DATE

BLUFFTON MOTOR WORKS
MODEL NUMBER
1303017158