

1 2 3 4

THE INFORMATION DISCLOSED HEREIN INCLUDES PROPRIETARY RIGHTS OF BLUFFTON MOTOR WORKS. NEITHER THIS DRAWING NOR THE INFORMATION DISCLOSED THEREIN SHALL BE REPRODUCED OR TRANSFERRED TO OTHER DOCUMENTS OR USED OR DISCLOSED TO OTHERS FOR MANUFACTURING PURPOSES OR FOR ANY OTHER PURPOSES EXCEPT AS SPECIFICALLY AUTHORIZED IN WRITING BY BLUFFTON MOTOR WORKS.

1103017443

UNLESS OTHERWISE SPECIFIED DIMENSIONS WITHOUT TOLERANCES ARE REFERENCE ONLY

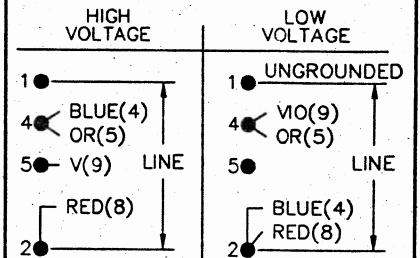
NOTES

- ECCENTRICITY OF THREADED PORTION OF SHAFT IS HELD WITHIN .010 T.I.R. WITH INDICATOR ON OUTSIDE DIA. OF GROUND RING GAUGE BEING STATIONARY WITH RESPECT TO THE MOTOR.

LEADS

TERMINAL BOARD

EXTERNAL CONNECTIONS



TO REVERSE, INTERCHANGE ORANGE (5) AND RED (8).

REF: 1100941401PR1

MOTOR DATA

TYPE	CSIR	FRAME	56 CZ	PH	1	ENCLOSURE	OPEN	END CAP	UNASSEMBLED	VIEWS	MOTOR ROTATION	REV
										LEAD END	ASSEMBLY ROTATION	CW
			60 HZ		50 HZ	BEARINGS			BALL / BALL		ASSEMBLY VOLTAGE	HIGH
HP			1.5		-	PAINT			#1 BLMW BLUE STANDARD		THERMALLY PROTECTED	TYPE N AUTOMATIC
SF			1.25		-	MOUNTING POSITION			HORIZONTAL / VERT DOWN		WINDING AND TEST SPEC	331986
RPM			3450		-	SHAFT MATERIAL			STRESS PROOF		CUSTOMER NAME	REMA DRI VAC CORP.
VOLTS			115 / 230		-	ENVIRONMENTAL CONDITION			NORMAL		CUSTOMER PART NO.	113378-B
FLA. AMPS			16.6/8.3		-	HAZARDOUS CLASSIFICATION			TEMP CODE -		DRAWN	GWB 2-5-10
S.F. AMPS			19.6/9.8		-						APPROVED	-
TIME RATE	CONT			MAX AMB.	40° C						RELEASED	-
KVA CODE	K			INS. CLASS	B							

BLUFFTON MOTOR WORKS

MODEL NUMBER

1103017443

