

1
2
3
4

THE INFORMATION DISCLOSED HEREIN INCLUDES PROPRIETARY RIGHTS OF BLUFFTON MOTOR WORKS. NEITHER THIS DRAWING NOR THE INFORMATION DISCLOSED THEREIN SHALL BE REPRODUCED OR TRANSFERRED TO OTHER DOCUMENTS OR USED OR DISCLOSED TO OTHERS FOR MANUFACTURING PURPOSES OR FOR ANY OTHER PURPOSES EXCEPT AS SPECIFICALLY AUTHORIZED IN WRITING BY BLUFFTON MOTOR WORKS.

1303017157

UNLESS OTHERWISE SPECIFIED DIMENSIONS WITHOUT TOLERANCES ARE REFERENCE ONLY

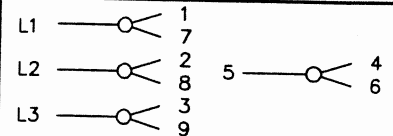
NOTES

- ECCENTRICITY OF THREADED PORTION OF SHAFT IS HELD WITHIN .010 T.I.R. WITH INDICATOR ON OUTSIDE DIA. OF GROUND RING GAUGE BEING STATIONARY WITH RESPECT TO THE MOTOR.

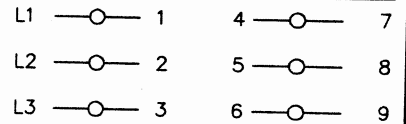
LEADS

4" +2, -0
WITH .44 STRIPPING

EXTERNAL CONNECTIONS



LOW VOLTAGE



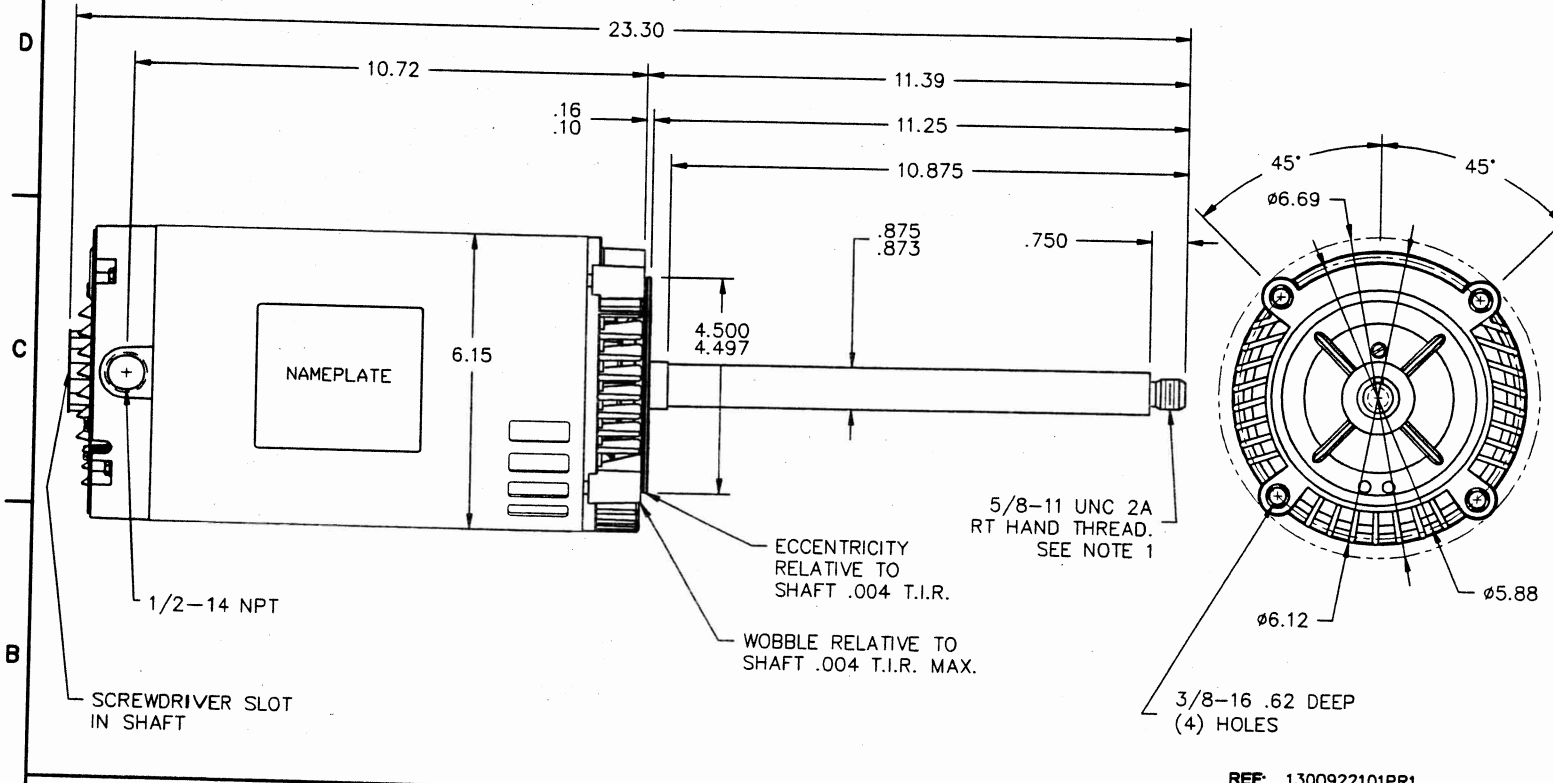
HIGH VOLTAGE

EQUIP. NO.	REV.	CHANGE	INITIAL DATE

BLUFFTON MOTOR WORKS

MODEL NUMBER

1303017157



REF: 1300922101PR1

MOTOR DATA

TYPE	POLY	FRAME 56 CZ	PH 3	ENCLOSURE OPEN	END CAP UNASSEMBLED	VIEWING LEAD END	MOTOR ROTATION REV
		60 HZ	50 HZ	BEARINGS	BALL / BALL	ASSEMBLY VOLTAGE	HIGH
HP	1.5	1.5	1.5	PAINT	GRAY PRIMER	THERMALLY PROTECTED	NONE
SF	1.15	1.0	1.0	MOUNTING POSITION	HORIZONTAL / VERTICAL DOWN	WINDING AND TEST SPEC	334189
RPM	3450	2875	2875	SHAFT MATERIAL	STRESS PROOF	CUSTOMER NAME	REMA DRI VAC
VOLTS	208-230 / 460	208-220 / 440	208-220 / 440	ENVIRONMENTAL CONDITION	NORMAL	CUSTOMER PART NO.	114794-B
FLA. AMPS	4.3-4.2 / 2.1	4.8-4.8 / 2.4	4.8-4.8 / 2.4	HAZARDOUS CLASSIFICATION	TEMP CODE -	DRAWN	GWB 1-14-10
S.F. AMPS	4.9-4.8 / 2.4	-	-			APPROVED	-
TIME RATE	CONT	MAX AMB.	40° C			RELEASED	-
KVA CODE	M	INS. CLASS	B				

A