

NSF 61/372 Single Stage Split Case Pumps

*For High Capacity Applications in
Commercial, Municipal, and Industrial Markets*

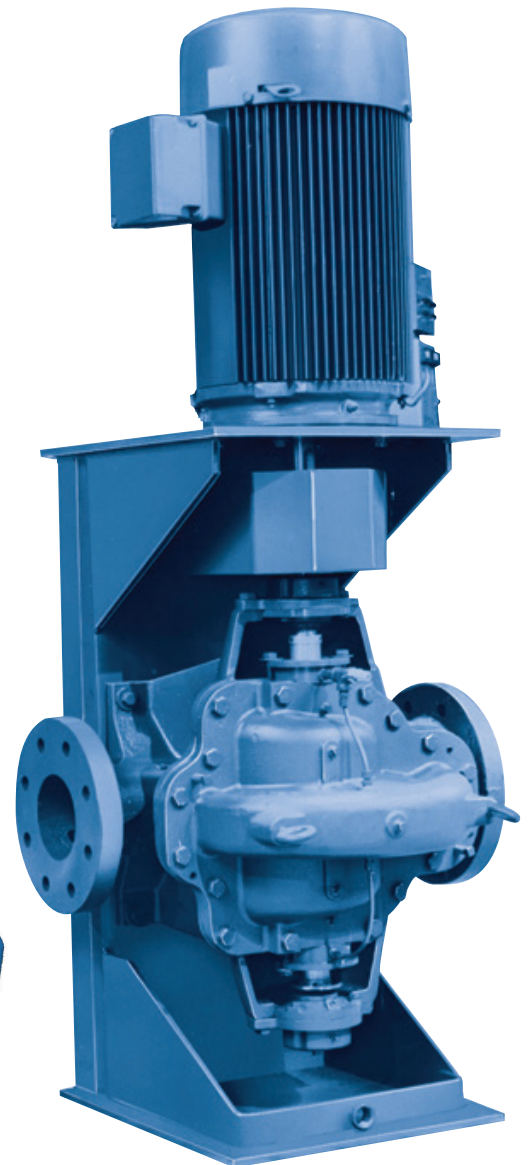
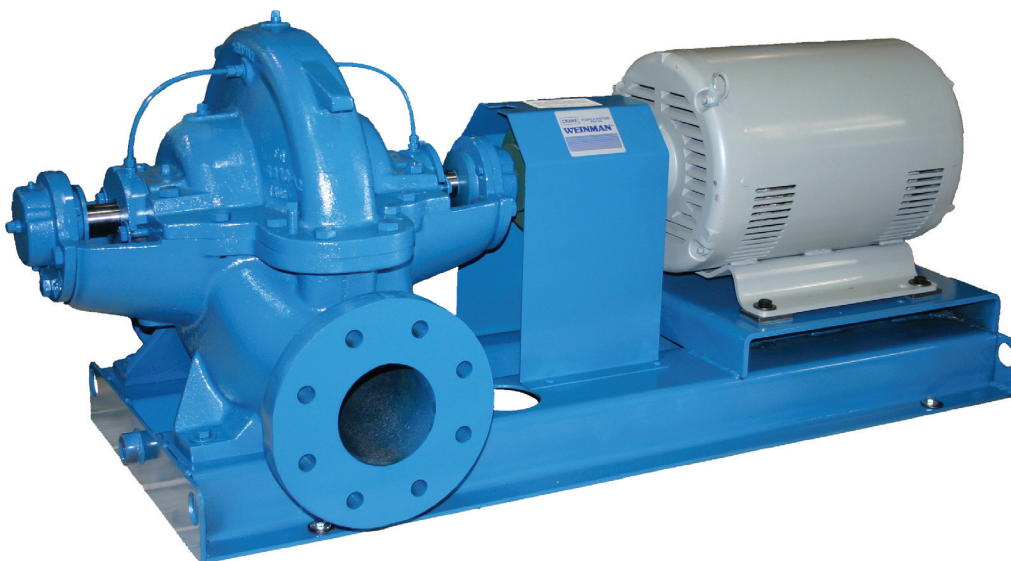
NSF 61/372 Weinman®-Deming® single stage split case pumps are used in a wide variety of applications. The NSF 61/372 certified single-stage horizontal L Series and vertical LVM series split case pumps meet the industry's highest standards for drinking water, and comply with the federally mandated Safe Drinking Water Act (SDWA). Weinman®-Deming® NSF split case pumps are recognized for their sophisticated hydraulic design, extensive hydraulic coverage, high efficiencies and rugged construction.

Weinman®-Deming® split case pumps meet design criteria of ASTM, HI, ANSI AISI, SAE and ASME.



Certified to
NSF/ANSI 61 & 372

Heads to 460ft.
Flows to 7000gpm
Up to 73°F (23°C)
Up to 12" Discharge



L Series

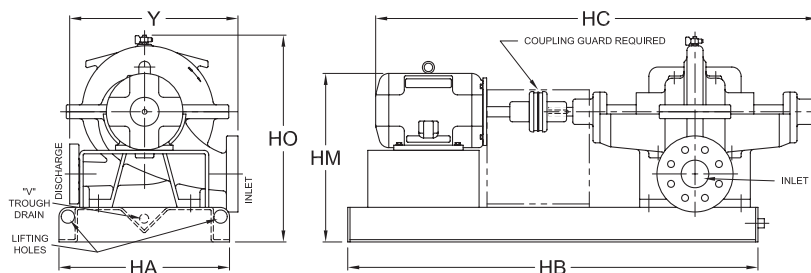
Weinman®-Deming® Single-Stage L Series Split Case Pumps are recommended for large capacity municipal, commercial and industrial liquid handling applications, including:

- Potable water transmission and treatment
- Chilled water circulation
- Pressure boosters
- Cooling towers
- Boiler feed services requiring high pressure and volume
- General service

NSF 61/372 Weinman®-Deming® single stage L series split case pumps are available in standard sleeveless design and optional sleeved design.

All Weinman®-Deming® L series split case pumps feature FDA approved mechanical seals and lead free materials of construction that make them the preferred pump for drinking water applications. L series pumps have extra heavy castings that absorb vibration and hydraulic noise assuring smooth and quiet operation. L series pumps are equipped with separate adjustable motor mounting plate that significantly reduces alignment time.

The standard spacer type coupling in L series pumps make servicing easier by reducing the time to replace seals and bearings. L series pumps are also furnished with a standard "V" trough base that collects condensation water and leaked media.



Dimensions (inches)

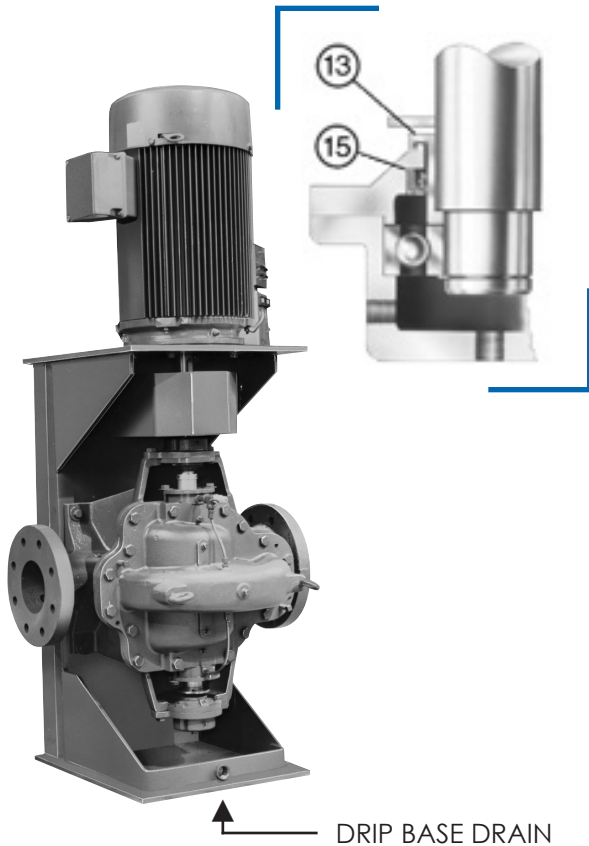
Pump Size	Dis.	Inlet	Max. Imp. Dia.	Max. HA	Max. HB	Max. HC	Max. HM	HO	Y
2L4A	2	3	9 ^{3/4}	20 ^{1/2}	52	2	23	1 ^{1/4}	17
2L5	2	3	14 ^{1/4}	20 ^{1/2}	52	62	23	25 ^{1/4}	20
2L6	2	3	11 ^{1/2}	20 ^{1/2}	52	62	23	25 ^{1/4}	18
3L4	3	4	10	20 ^{1/2}	60	67	24	26	19 ^{1/4}
3L5	3	4	14 ^{1/4}	20 ^{1/2}	60	67	24	26	22 ^{1/2}
3L6	3	4	11 ^{1/2}	20 ^{1/2}	52	62	23	25 ^{1/4}	21
4L1A,B	4	5	14	20 ^{1/2}	60	67	24	26	26
4L2	4	5	11	20 ^{1/2}	52	62	23	25 ^{1/4}	24 ^{1/2}
4L3	4	5	8	20 ^{1/2}	52	62	23	25 ^{1/4}	20 ^{1/2}
4L4	4	6	9 ^{1/2}	22 ^{1/2}	60	71	27	28	21 ^{1/2}
5L1	5	6	14 ^{3/4}	22 ^{1/2}	60	71	27	28	30 ^{1/2}
5L2	5	6	12	20 ^{1/2}	60	67	24	26	26
5L3	5	6	8 ^{3/4}	20 ^{1/2}	52	62	23	25 ^{1/4}	23 ^{1/2}
6L1	6	8	16	28 ^{1/2}	68	78	30	31	33
6L2	6	8	12	22 ^{1/2}	60	67	25	28	28 ^{1/2}
6L3	6	8	9	20 ^{1/2}	60	67	24	26	27 ^{1/2}
6L7	6	8	20	28 ^{1/2}	80 ^{1/2}	83 ^{7/8}	31	32 ^{3/4}	31
8L1	8	10	16	28 ^{1/2}	72	83	33	40	36
8L2A,B	8	10	12 ^{1/4}	28 ^{1/2}	68	78	30	31	34
8L3	8	10	10	22 ^{1/2}	60	69	26	28	32
8L7	8	10	17	28 ^{1/2}	80 ^{1/2}	83 ^{7/8}	31	32 ^{3/4}	29
8L8	8	10	20	28 ^{1/2}	80 ^{1/2}	83 ^{7/8}	33 ^{1/2}	34 ^{3/4}	32
10L2A	10	12	14	28 ^{1/2}	76	86 ^{1/4}	33	37 ^{1/4}	40
10L3A,B	10	12	11 ^{3/4}	28 ^{1/2}	68	80	31	35	36 ^{1/2}
10L7	10	12	14 ^{1/2}	28 ^{1/2}	80 ^{1/2}	83 ^{7/8}	33 ^{1/2}	34 ^{3/4}	35
10L8	10	12	16 ^{1/2}	28 ^{1/2}	80 ^{1/2}	83 ^{7/8}	33 ^{1/2}	34 ^{3/4}	37
12L2 A,B,C	12	12	13 ^{1/2}	28 ^{1/2}	72	83	33	40	40

All dimensions are approximate and for illustration purposes only.

LVM Series

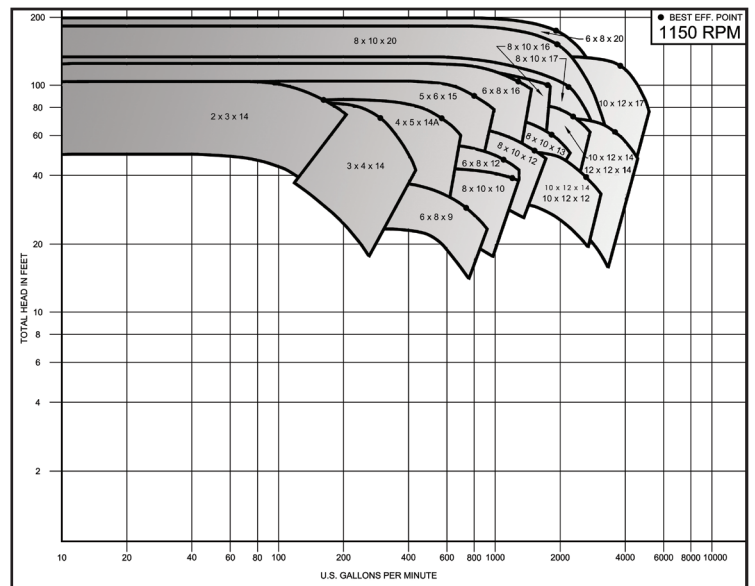
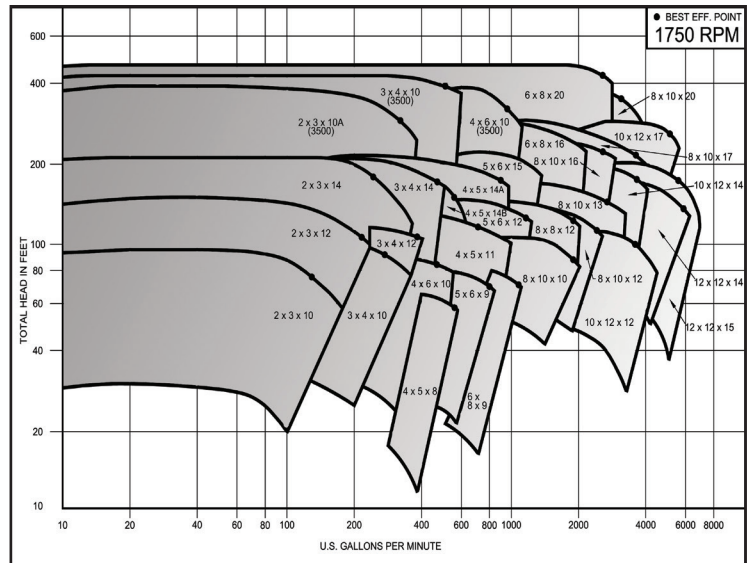
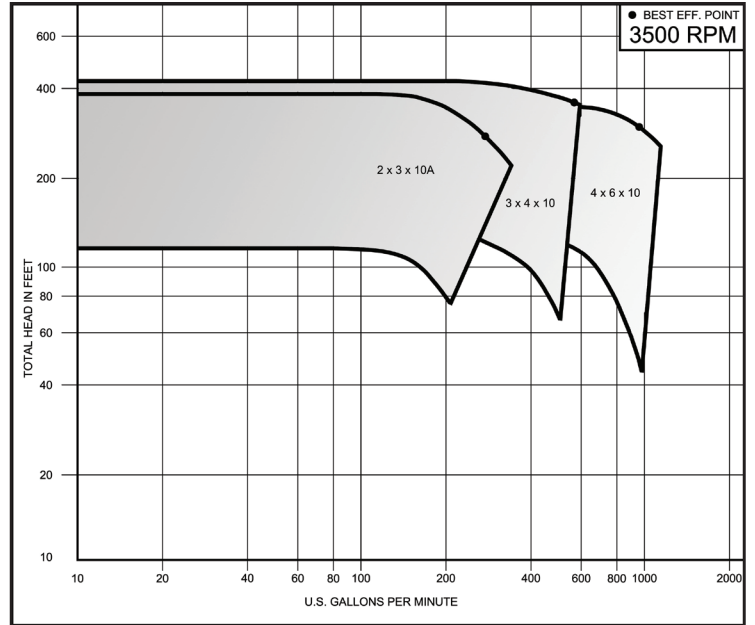
Weinman®-Deming® Single-Stage LVM Series split case pumps provide the same reliable performance as L Series pumps. Their vertical design reduces footprint and makes installation easier, especially in small or restricted areas.

LVM Thrust Bearing Configuration for Type LVM1-LVM6



Similar to NSF L series split case pumps, LVM series pumps also feature FDA approved mechanical seals, lead free materials of construction, heavy castings, adjustable motor mounting plate and standard spacer type coupling. LVM series pumps have thrust collar sleeves that prevent the rotating assembly from dropping should a bearing fail. Lip seals prevent liquid from entering the lower bearing housing.

L & LVM Series Selection Curves





A Crane Co. Company

Crane Pumps & Systems
420 Third Street
Piqua, Ohio 45356
(937) 778-8947
Fax (937) 773-7157
www.cranepumps.com

PUMPS & SYSTEMS

Crane Pumps & Systems Canada
83 West Drive
Brampton, Ont. Canada L6T 2J6
(905) 457-6223
Fax (905) 457-2650

© 2017 Crane Pumps & Systems, Inc.
A Crane Co. Company
Printed in U.S.A.
W1210BRO - Rev. A (11/17)



brands you trust.

BARNES®

burks®

DEMING®

WEINMAN®



PROSSER®