

**CRANE**®

# Crane Pumps & Systems

## VERTICAL IN-LINE PUMPS



- Overview
- Applications
- Product Selection & Pricing
- Sales & Marketing Tools
- Key Takeaways

Burks brand is highly reliable and competitively priced, providing quick delivery to a broad range of miscellaneous services at lower capacities.

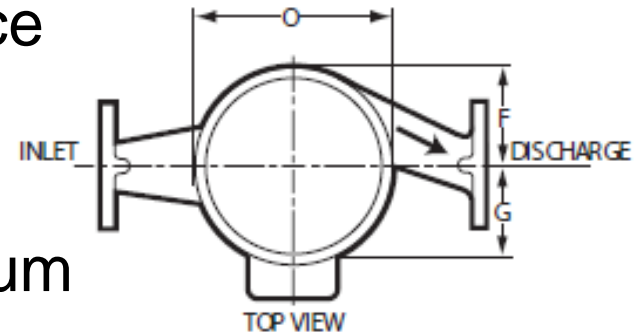
Weinman brand is dependable, competitively priced, with competitive deliveries for a broad range of commercial water supply services.

**burks**®

**WEINMAN**®

## Why Use An Inline?

- Suction and discharge nozzles are located 180° apart on the same centerline.
- Smaller footprint - Uses vertical space instead of horizontal space
- The need for costly foundations is eliminated, which guarantees minimum space requirements.
- The motor, bracket and rotating assembly can be removed from the casing without disturbing the piping.



## **Series GB Advantages**

- Install in any position – Horizontal, Vertical or at an angle.
- Replaceable Casing Wear Rings
- Self Adjusting Mechanical seals with optional Viton or EPDM materials for high temperature operation.
- Standard NEMA 56 J frame motors

## **Series GB Features & Benefits**

- **Casing** - Heavy one-piece casting with flanged suction and discharge on common center line.
- **Impeller** - Fully enclosed one-piece design. Balance chamber provides control of stuffing box pressure and limits axial thrust. Replaceable wear ring.
- **Top Pull-Out Simplifies Maintenance** - Complete rotating assembly easily removed for inspection without disturbing piping. Full circle register protected by confined gasket assures permanent alignment.



## Performance Details - Burks

- 80 GPM and 110 Ft of Head
- 1.5" Discharge
- 150lb ANSI flanges (FF)
- Temp to 225 Degrees Fahrenheit with Standard Seal
- Iron/Bronze Fitted/Bronze
- 3550 RPM
- 1/3 - 2 HP



**burks**<sup>®</sup>

## ***Weinman Series 320 Advantages***

- The impeller, mechanical seal, bronze shaft sleeve, and bronze wear rings are accessible for easy maintenance.
- Mechanical seals and bronze wear ring(s) are supplied as standard on certain pumps.
- A built in purge system assures proper flushing and venting of seals.
- Standard NEMA frame motors with JM shafts in most models specifically designed for mechanical seal applications are used.

The logo for WEINMAN, featuring the word "WEINMAN" in a bold, blue, sans-serif font with a slight shadow effect.

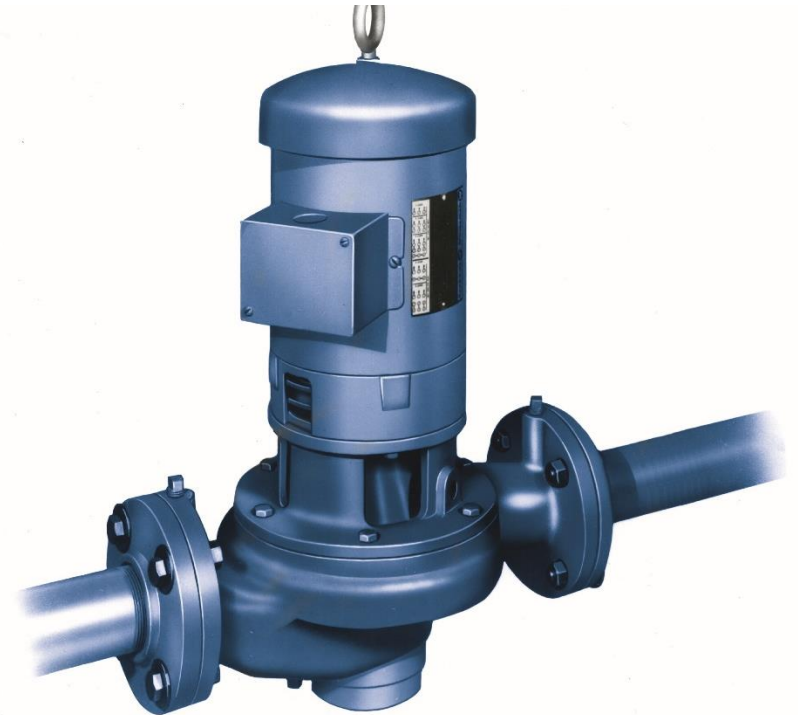


# Weinman 320 Vertical In-Line

*Everyone. Everywhere. On Time Every Time.*

## Performance Details - Weinman

- Flows to 720 GPM
- Heads to 340 FT
- Discharge sizes from 1.5" to 4"
- Horsepower up to 60HP





## **Features & Benefits**

- Automatic purge system allows liquid to flow from high pressure side of impeller across seal face to low pressure eye of impeller, assuring proper lubrication and venting.
- Manual vent plug ensures positive lubrication at start up.
- NEMA JM Frame motors are standard on all models.
- Front wear rings on all models. Rear wear rings on certain models.
- ANSI flanges standard 125lb (250lb available).
- Mechanical seal.
- Pressure gauge tappings at suction and discharge flanges.
- Motor can be rotated at 90° intervals for convenient junction box location.
- Bronze motor shaft sleeve.
- Bronze enclosed impeller

- Overview
- **Applications**
- Product Selection & Pricing
- Sales & Marketing Tools
- Key Takeaways

*Everyone. Everywhere. On Time Every Time.*

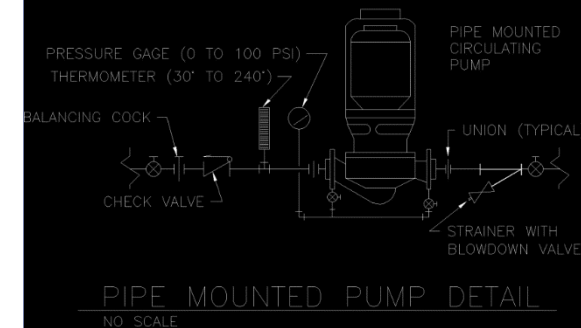
Boiler / Chiller Circulation

Pressure Boosting

Fluid Transfer

Applications

- Water
- Chemicals
- Brine
- Heating
- Cooling
- Industrial Processes
- Liquid Circulation



# Vertical Inline Pumps

*Everyone. Everywhere. On Time Every Time.*

Inline Booster Pump



HVAC Machine Rooms



- Overview
- Applications
- **Product Selection & Pricing**
- Sales & Marketing Tools
- Key Takeaways

## Obtain primary design conditions

- Design flow rate
- Design total head
- Solids Size

## Select pump size & type

- Configuration type
- Suction & discharge size

## Use On-Line

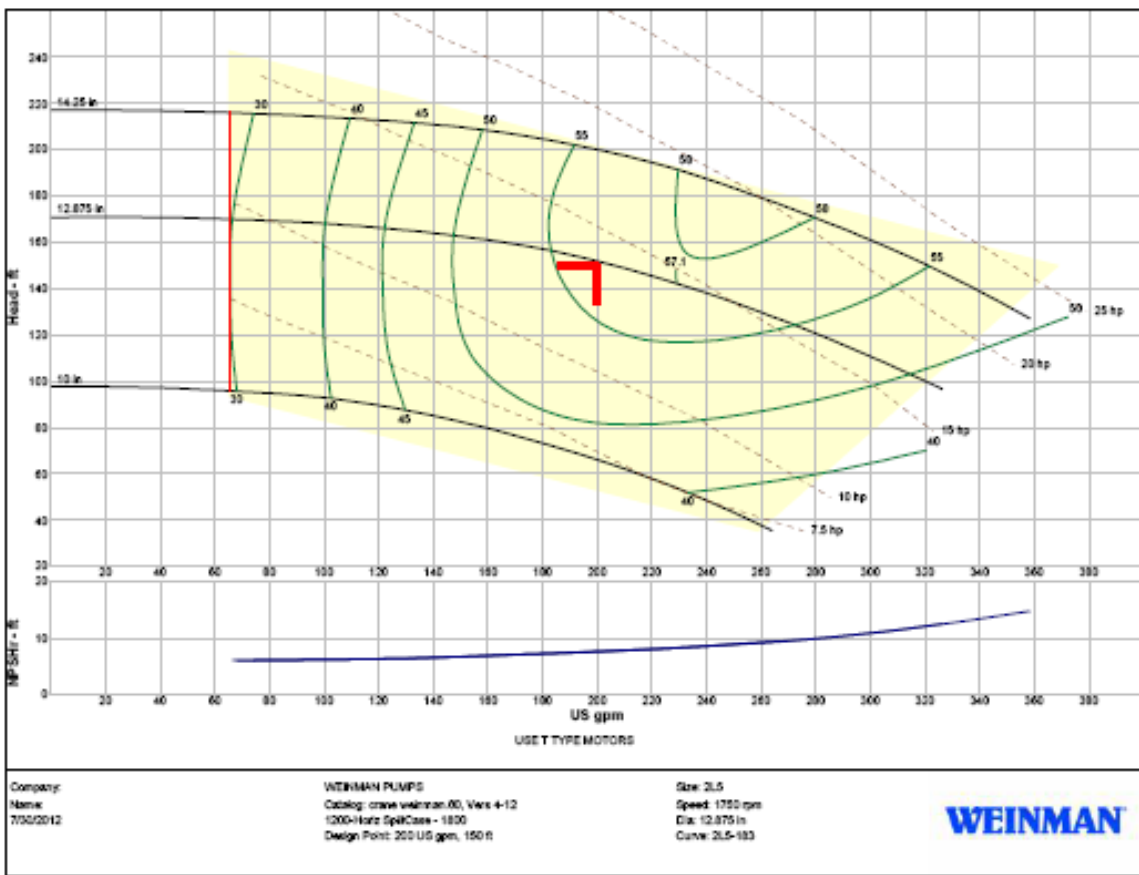
- Draw system curve for minimum static head
- Determine HP at intersection of curves and select motor

- Overview
- Applications
- Product Selection & Pricing
- **Sales & Marketing Tools**
- Key Takeaways



Everyone. Everywhere. On Time Every Time.

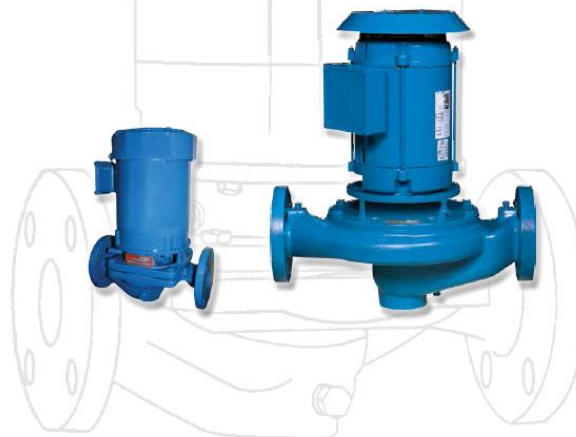
- Curves in Mentor
- Brochures



## Vertical Inline Solutions

brands you trust.

### Product Overview



burks

WEINMAN

- Overview
- Applications
- Product Selection & Pricing
- Sales & Marketing Tools
- **Key Takeaways**

*Everyone. Everywhere. On Time Every Time.*

Two Models  
Burks GB &  
Weinman 320

Centerline  
back pull-out  
design

Flanged  
suction and  
discharge

Close  
Coupled  
Designs

Packing/  
mechanical  
seal options

